

Project of the Month

PROJECT TEAM INCLUDES TMP CONSULTING ENGINEERS, ROSS & BARUZZINI AND PRESSLEY ASSOCIATES

Terminal A at Boston's Logan Int'l. Airport earns LEED designation by U.S. Green Building Council

BOSTON, MA According to Skanska USA Building Inc., the new Terminal A at Boston's Logan International Airport, which it delivered in 2005, has been LEED (Leadership in Energy and Environmental Design) certified by the U.S. Green Building Council (USGBC). This is the first airport terminal building in the world to receive LEED certification, a national standard for developing high-performance, sustainable buildings.

Skanska provided construction management services for the project valued at approximately \$400 million, replacing a 33 year old terminal with a state of the art facility totaling 744,000 s/f. The new Terminal A officially opened to the public on March 16, 2005.

To achieve LEED certification, the construction process of the new Terminal A at Logan followed several green building principles, including the use of recyclable materials, natural lighting, energy conservation plans and alternative fuel sources.

According to the USGBC, the LEED Green Building Rating System is a voluntary, consensus-based national standard developed and refined by the Council's members. "We are very pleased and honored to receive this certification," said Andy Moore, principal-in-charge of the project. "Terminal A is now a national model for environmentally-friendly airport facilities. Our team of professionals is certainly proud to have played a part in it."

For the redevelopment program at Boston's Logan International Airport, Skanska demolished the exist-



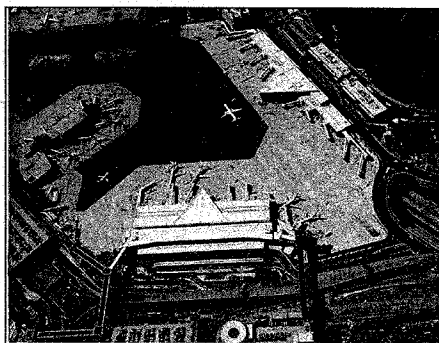
ing Terminal A structure and constructed new landside access and egress roads. In addition to the new vehicle circulation patterns that were central to the project, new airside aprons, utility upgrades, an underground fuel system and other facility improvements were also included.

Terminal A was Logan's first new terminal complex to be constructed in over 30 years. There are three sections to the 686,480 s/f facility including the 371,905 s/f 8-gate main terminal building; a 289,375 s/f 10-gate satellite terminal building; and a 600-foot long 25,200 s/f underground pedestrian tunnel linking the two terminals. The terminals are extended by 3-story triangular glass nodes that house shops and lounges, while the design of the satellite building actually provides the neighboring East Boston community with a sound buffer.

Other environmentally conscious

measures supporting this effort include providing alternative airport transportation for passengers such as shuttle buses to outlying communities as well as to subway, bus and commuter rail lines and special storm water filtration devices that remove total suspended solids and total phosphorus from the site run off.

Roofing membrane and paving that reflects heat from the building as well as drip irrigation instead of spray head reduce water required for irrigation by at least 50% providing environmental support to the project. Special low e-glass that reflects heat away from the windows to minimize heat loss in the winter and heat gain in the summer, as well as special lighting controls that automatically dim the lights when ample natural light is available were both utilized. More than 75% of the construction/demo waste was reused, recycled or otherwise diverted from area landfills.



Terminal A also houses state-of-the-art technologically advanced Baggage Handling Systems (BHS) and Explosion Detection Systems (EDS). The BHS and EDS process starts at the bag belts in the terminal

lobby and moves to a behind the scenes operation enabling every bag to be identified, checked, and tracked during its journey through the BHS, continuing onto the planes. This newly developed airport wide secu-

rity system consists of a combination of biometric and card recognition equipment. Additionally, this system utilizes a CC-TV system with numerous cameras located throughout the terminals including 16 that monitor the checkpoint area.

The terminal was designed and constructed with LEED certification in mind. Terminal A's redevelopment affirms the Project Team's environmental commitment, with "green technology" design. Sustainable strategies from the U.S. Green Building Council's LEED rating system were built into the specifications. A sampling of the environmental materials used in constructing the terminal include terrazzo flooring made in the New England region, low VOC paint, and crushed stones and trespas glass and aluminum composite panels that could be melted down and reused. It not only looks beautiful, it also has all the properties needed for a heavily utilized building such as an airport.

Terminal A at Logan International Airport Project Team	
Co-Construction Managers	Skanska USA Bldg./Tishman Const.
Electrical Engineer	TMP Consulting Engineers
Security & Communications Systems	Ross & Baruzzini
Landscape Architects	Pressley Associates
Operator	Delta Airlines
Owner/Operator	Massport

LANDSCAPE ARCHITECTS



Pressley Associates Landscape Architects are members of the U.S. Green Building Council, a leading national consensus to produce a new generation of buildings that deliver high performance inside and outside.

William Pressley, FASLA, LEED AP, Swaathi Joseph, LEED AP and the staff at Pressley Associates are working to promote sustainable landscapes and green building design.

Some of Pressley's recent successes include Green Roofs at the West Office Building at the World Trade Center in Boston's Seaport District, at the Broad Institute in Cambridge and at 245 Summer Street in Boston.

LEED certified Delta Terminal A at Logan Airport is the first such airport terminal in the country to receive such certification. Pressley Associates commitment to sustainability is reflected in our efforts to minimize development impact.



pressley

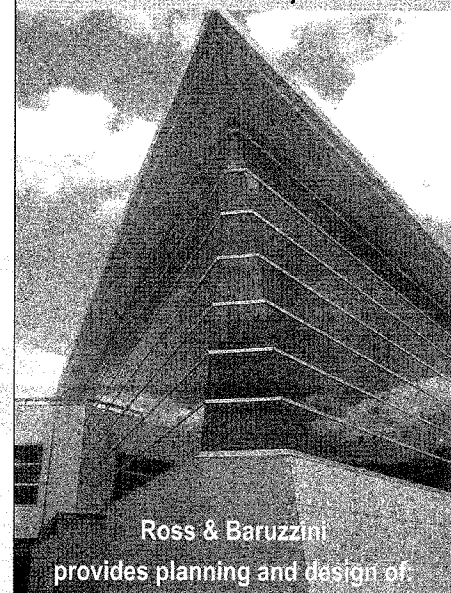
Pressley Associates
Landscape Architects
432 Columbia Street
Cambridge, MA 02141

Phone 617.491.5303
Fax 617.491.7502
Web www.pressleyinc.com

SECURITY & IT

Ross & Baruzzini consulting engineers

Ross & Baruzzini is proud to be the engineer-of-record for IT and security systems for Boston's Logan International Airport Terminal A Project



Ross & Baruzzini provides planning and design of

Information Technology

Security Systems

Communications Infrastructure

Wireless Technologies

Systems Integration

Mechanical + Electrical Engineering

Emergency Operations Centers

6 South Old Orchard • St. Louis, Missouri 63119 • t: 314.918.8383

St. Louis • Houston • Miami
www.rossbar.com